

Assembly and installation instructions for **AVERO Motion/AVERO Motion E**

Part No 810150550/Part No 810150540



PRISM MEDICAL

1. Preface..... 4

2. Unpacking and assembly..... 5

2.1 Required tools..... 5

2.2 Removing the cardboard 6

2.3 Loosen from the pallet 7

2.4 Assembly at the place of use..... 8

2.5 Water and waste water connection..... 9

2.6 Electrical connection..... 9

2.7 Disposal of packing material..... 9

3. Dimensions AVERO Motion..... 10

4. Connection diagrams 11

5. Manufacturer 15

1. Preface

Dear client,

In order to ensure the safety of the product, please consider the following points:

1. Please read the accompanying documents (operating instructions / service manual) enclosed with the product carefully.
2. Use the equipment solely for its intended purpose.
3. Only instructed and qualified staff are permitted to operate the equipment.
4. Maintenance and safety-related checks may only be carried out by BEKA-Hospitec or by specialist companies authorised by BEKA-Hospitec.
5. Assemblies, extensions, changes or repairs may only be carried out by BEKA-Hospitec or by specialist companies authorised by BEKA-Hospitec.
In the case of technical alterations, such as additions or changes to our equipment that are not carried out by BEKA-Hospitec or by specialist companies authorised by BEKA-Hospitec, any warranty for the changes as well as for the equipment or equipment functions associated with the change, shall be forfeited.

Liability and warranty

The manufacturer of the equipment shall only be responsible for the safety and reliability of the equipment if:

- a. The equipment is only used in accordance with its intended purpose,
- b. Regular functional tests/maintenance has been carried out.

Note:



All safety information in the operating instructions must be considered.

WARNING:

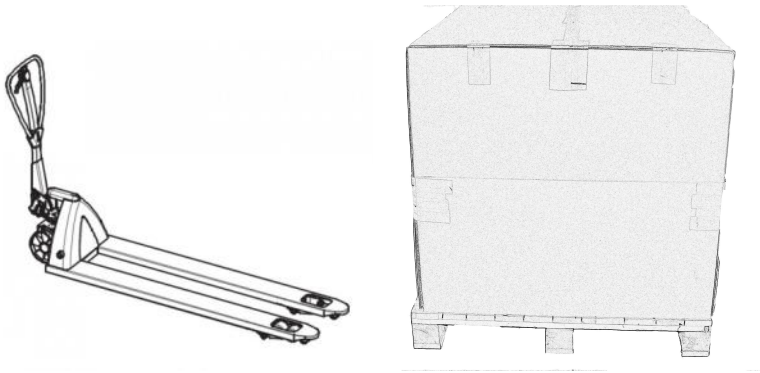


Any unauthorised repairs, modifications or changes are not permitted for safety reasons and any liability of the manufacturer shall be excluded for damage arising as a result of these repairs, modifications or changes.

Any further liability of the manufacturer shall be excluded for damages resulting from the use of spare parts or accessories that are not approved by the manufacturer.

2. Unpacking and assembly

Transport the seating and reclining tub into the vicinity of the intended installation site.



Use a pallet or similar for transporting.

Position the tub so that it is secure and cannot tip.

2.1 Required tools

To remove the packing, you will need:

Stanley knife



Cordless screwdriver



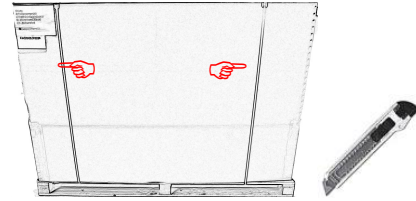
Bit, AW 20



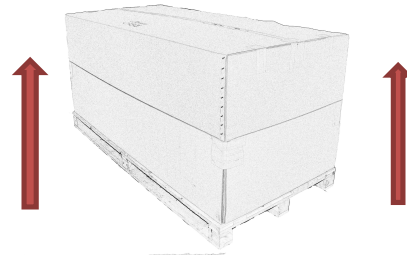
2.2 Removing the cardboard

Cut through the tightening straps using the stanley knife and remove these.

Note: Do not cut into the cardboard box, since this may cause damage to the surface of the bathtub!



Lift the carton and set it aside.



2.3 Loosen from the pallet

AVERO Motion

The tub is attached with tightening straps and screws through the stands on the pallet.

Remove the 8 screws using a cordless screwdriver and a matching bit.

Then take out the screws and remove the tightening straps.



After all fasteners are released, remove the lifting tub from the pallet and position it in the intended place of use

Remove the bubble wrap and stretch film. Make sure the tub surface does not get damaged due to the use of tools.

2.4 Assembly at the place of use

Required tools:

Spirit level



Adjustable wrench SW10



With the spirit level and the wrench (SW10) align the tub so that it is perpendicular.

The bath feet height can be adjusted by screwing or unscrewing.

Make sure that all feet touch the ground and the tub has a firm footing. To align the tub must not be tilted.

2.5 Water and waste water connection

The water connection of the AVERO Motion must be carried out in accordance with the technical drawings (see appendix) of BEKA Hospitec and the directives for the construction of wet areas as well as current VDE standards.

All inlet and outlet hoses must be arranged in such a way that there is no danger of tripping over them.

Before the bathtub is assembled, the connection lines must be sufficiently rinsed.

Before start-up, the thermostatic mixer must be calibrated by a trained person.

2.6 Electrical connection

Connection to the mains:

When connecting the equipment to the mains, the special national requirements must be taken into account (e.g. DIN VDE 0100-710 in Germany).

The lifting bathtub is connected via a junction box IP X5, 110 V AC/60 Hz, 3x1.5 mm², 1.5 KW, 16 ampere, earth leakage circuit breaker 30 mA, potential equalisation according to DIN VDE 0107.

Please note that the connection must be carried out by a trained electrical specialist.

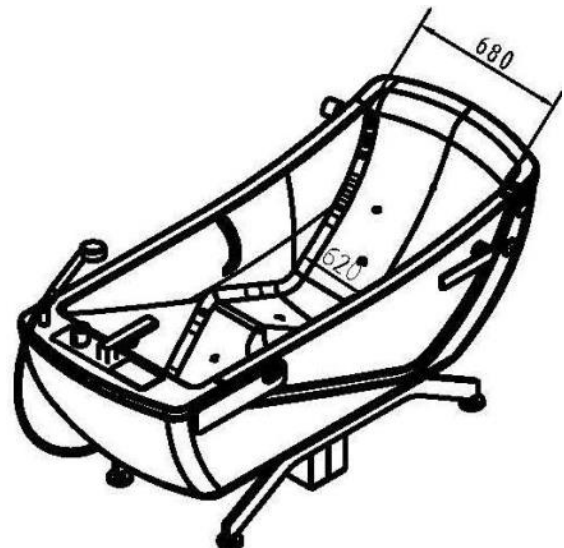
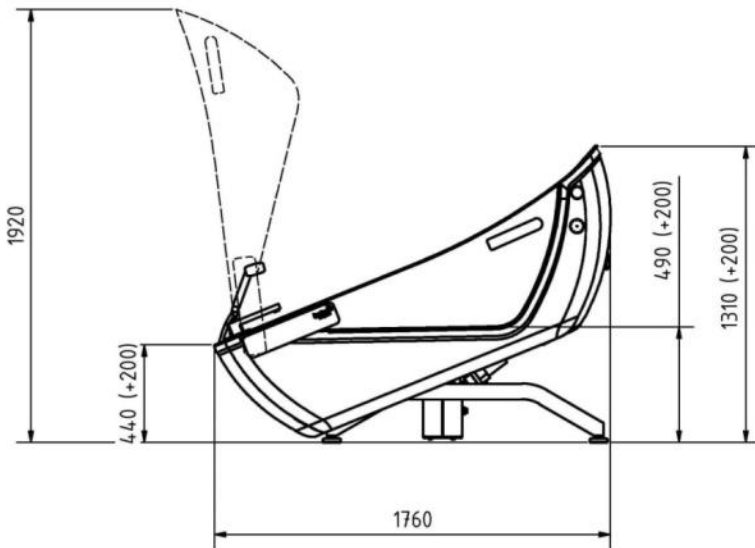
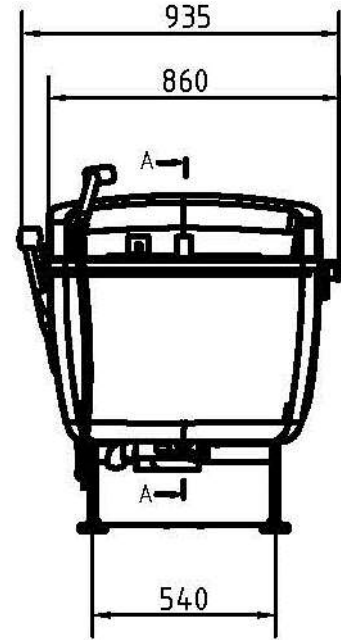
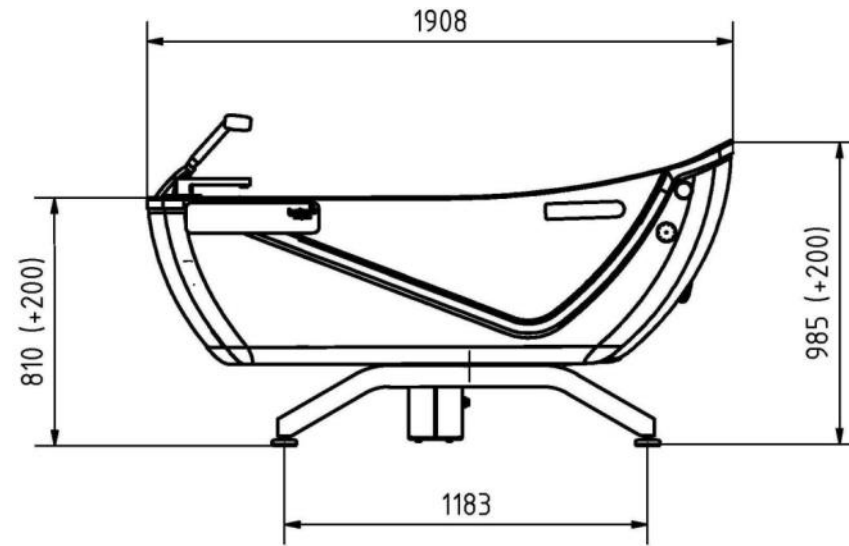
Protective earth conductor:

When using equipment of protection class I, the quality of the protective earth conductor and maintenance is important. It should be noted that requirements are specified by the national authorities in many countries.

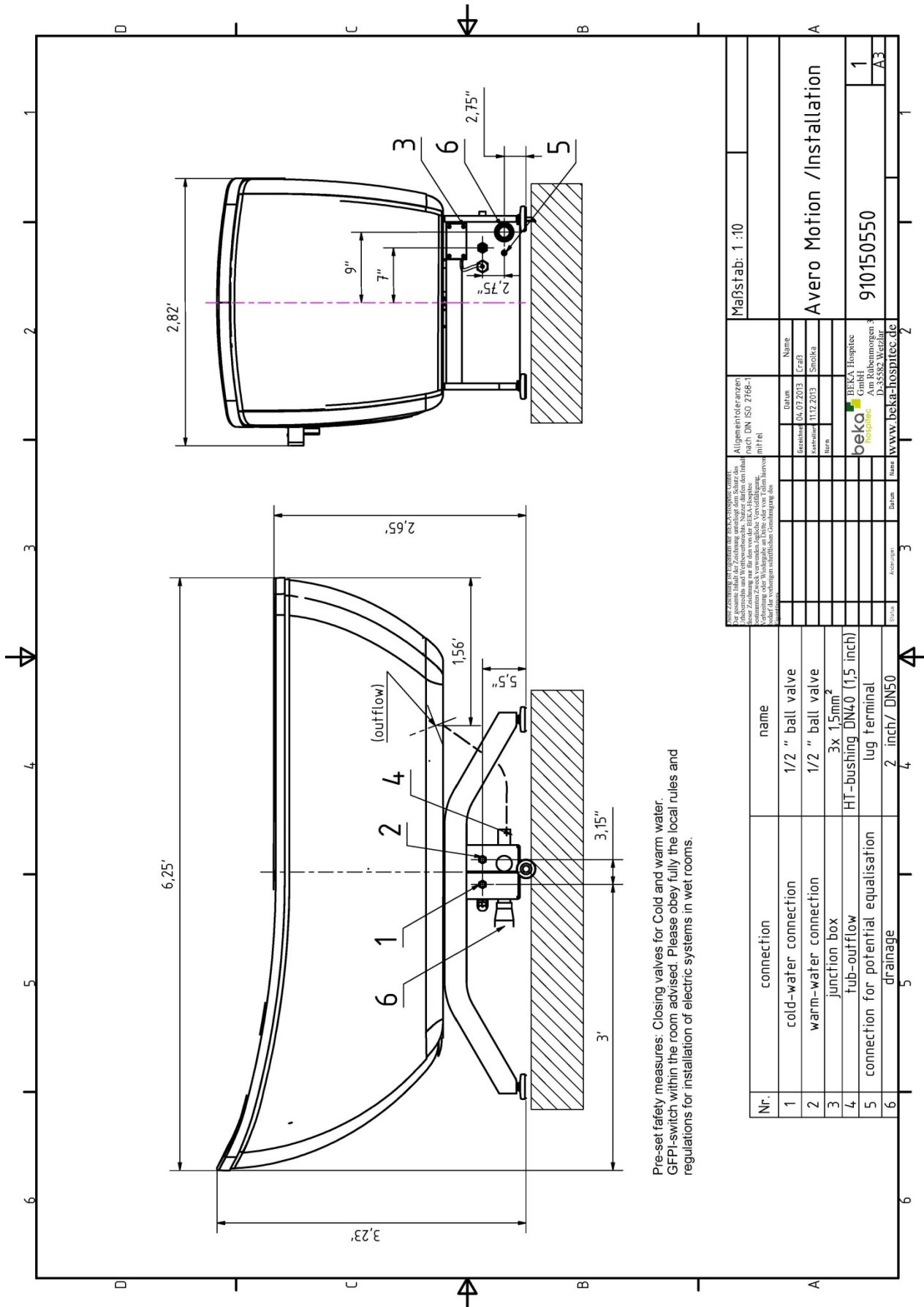
2.7 Disposal of packing material

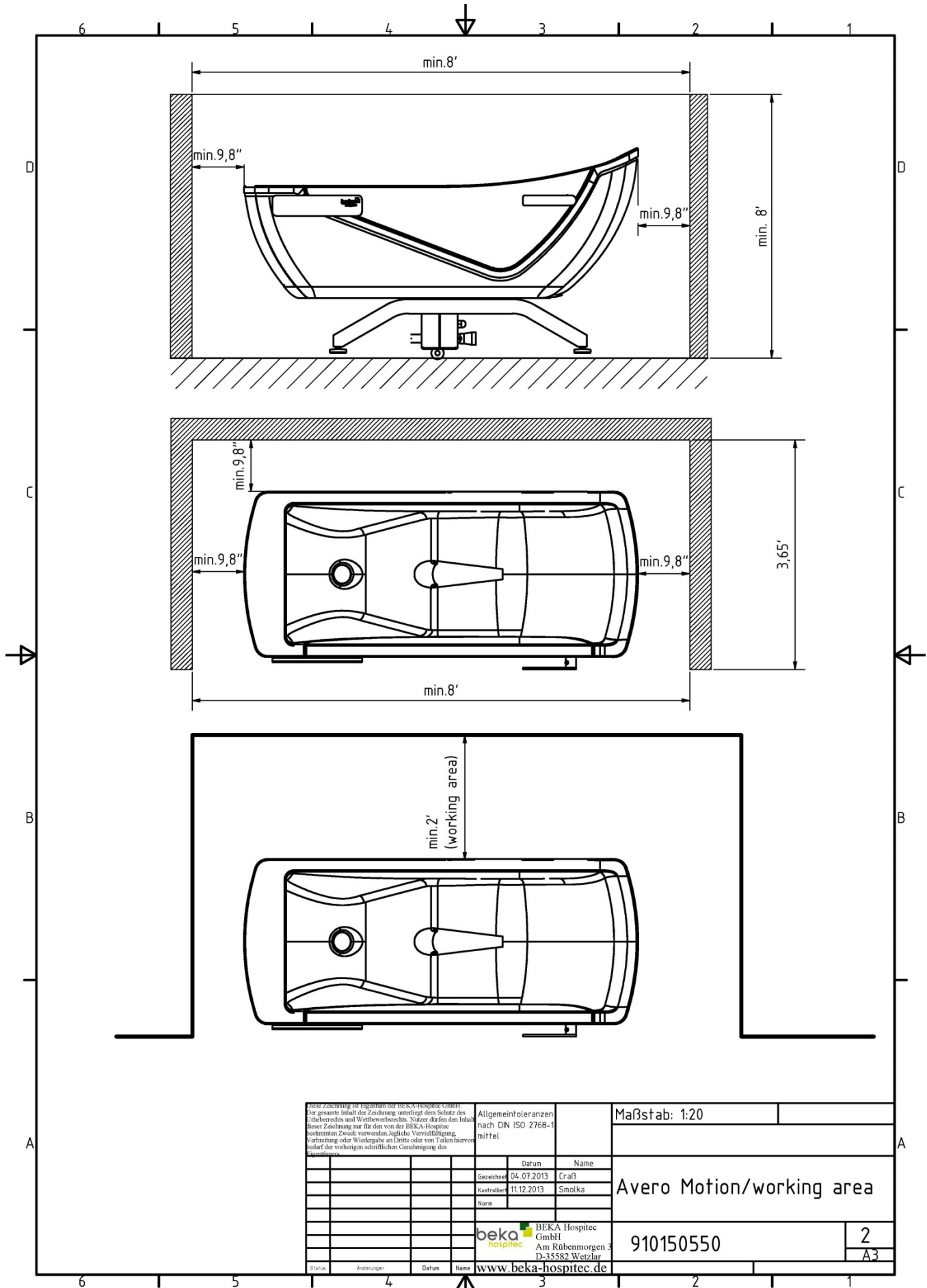
Please recycle the packing materials supplied with the lifting bathtub in accordance with the applicable local regulations and laws. If you have any further questions, feel free to contact us on the following number: +49 (0) 641-92220-0.

3. Dimensions AVERO Motion (mm)

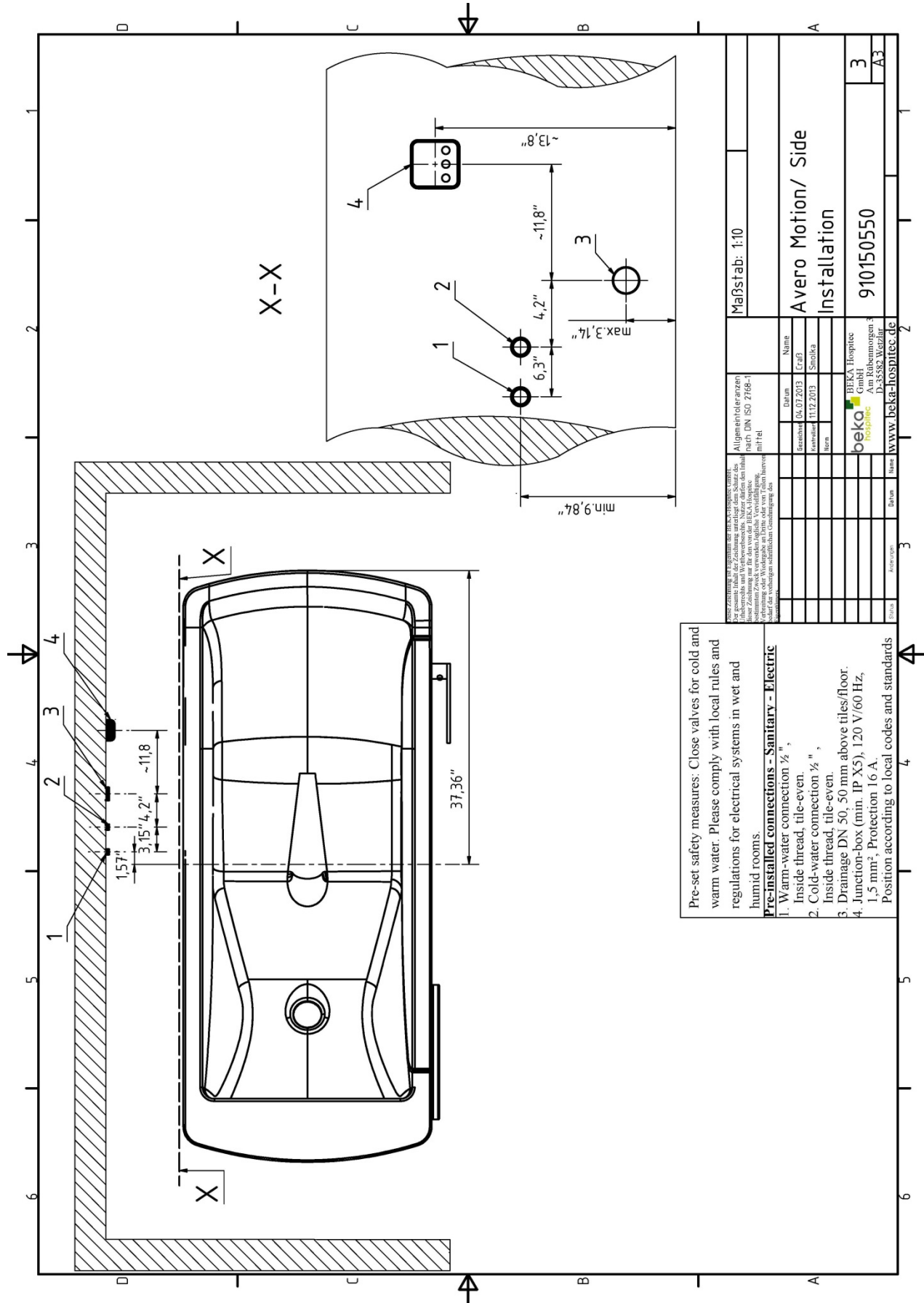


4. Connection diagrams (inches)





<p><small>Diese Zeichnung ist Eigentum der BEKA-Hospitec GmbH. Der gesamte Inhalt der Zeichnung unterliegt dem Schutz des Urheberrechts und Wettbewerbsrechts. Nutzer dürfen den Inhalt dieser Zeichnung nur für den von der BEKA-Hospitec bestimmten Zweck verwenden. Jegliche Vervielfältigung, Verbreitung oder Weitergabe an Dritte oder von Dritten hiervon bedarf der vorliegenden schriftlichen Genehmigung des Eigentümers.</small></p>		<p>Allgemeintoleranzen nach DIN ISO 2768-1 mittel</p>		<p>Maßstab: 1:20</p>	
		Datum	Name		<p>Avero Motion/working area</p>
		Gezeichnet	04.07.2013	Craß	
		Kontrolliert	11.12.2013	Smolka	
		Name			
		<p>beka hospitec</p>		<p>BEKA Hospitec GmbH Am Rübenmorgen 3 D-35582 Wetzlar</p>	
		<p>www.beka-hospitec.de</p>		<p>910150550</p>	
Status	Änderungen	Datum	Name		<p>2 A3</p>



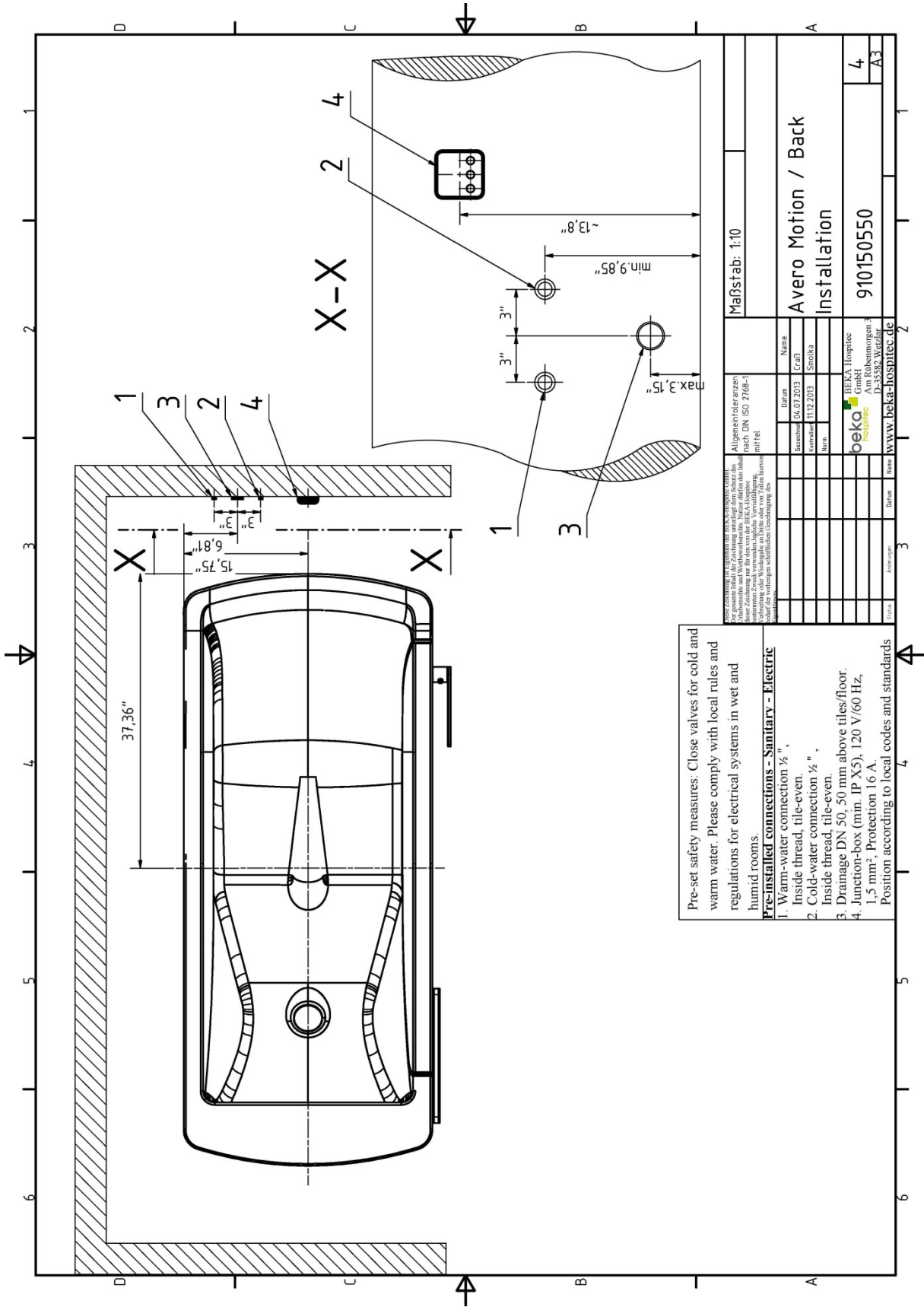
Pre-set safety measures: Close valves for cold and warm water. Please comply with local rules and regulations for electrical systems in wet and humid rooms.

Pre-installed connections - Sanitary - Electric

1. Warm-water connection 1/2", Inside thread, tile-even.
2. Cold-water connection 1/2", Inside thread, tile-even.
3. Drainage DN 50, 50 mm above tiles/floor.
4. Junction-box (min. IP X5), 120 V/60 Hz, 1,5 mm², Protection 16 A.

Position according to local codes and standards

Maßstab: 1:10		Name	
Allgemeinleistungen		Erreicht 04.07.2013	
nach DIN ISO 7768-1		Kreiert 11.12.2013	
mit tel		Smolka	
Name		BEKA Hospitec GmbH	
Datum		Am Rübenmorgen 3	
Erreicht		D-35882 Wetzlar	
Kreiert		www.beka-hospitec.de	
Name		3	
Datum		A3	



Pre-set safety measures: Close valves for cold and warm water. Please comply with local rules and regulations for electrical systems in wet and humid rooms.

Pre-installed connections - Sanitary - Electric

1. Warm-water connection 1/2" Inside thread, tile-even.
2. Cold-water connection 1/2" Inside thread, tile-even.
3. Drainage DN 50, 50 mm above tiles/floor.
4. Junction-box (min. IP X5), 120 V/60 Hz, 1,5 mm², Protection 16 A.

Position according to local codes and standards

<p>Alle Angaben sind ohne Gewähr. Änderungen vorbehalten. Nachdruck, Vervielfältigung und Verbreitung, auch auszugsweise, ist ohne schriftliche Genehmigung der BEKA Hospitec GmbH.</p>		<p>Maßstab: 1:10</p>	
<p>Alle Angaben sind ohne Gewähr. Änderungen vorbehalten. Nachdruck, Vervielfältigung und Verbreitung, auch auszugsweise, ist ohne schriftliche Genehmigung der BEKA Hospitec GmbH.</p>		<p>Avero Motion / Back Installation</p>	
<p>Alle Angaben sind ohne Gewähr. Änderungen vorbehalten. Nachdruck, Vervielfältigung und Verbreitung, auch auszugsweise, ist ohne schriftliche Genehmigung der BEKA Hospitec GmbH.</p>		<p>910150550</p>	
<p>Alle Angaben sind ohne Gewähr. Änderungen vorbehalten. Nachdruck, Vervielfältigung und Verbreitung, auch auszugsweise, ist ohne schriftliche Genehmigung der BEKA Hospitec GmbH.</p>		<p>4</p>	
<p>Alle Angaben sind ohne Gewähr. Änderungen vorbehalten. Nachdruck, Vervielfältigung und Verbreitung, auch auszugsweise, ist ohne schriftliche Genehmigung der BEKA Hospitec GmbH.</p>		<p>A3</p>	

5. Manufacturer



BEKA Hospitec Ltd.
Am Rübenmorgen 3
35582 Wetzlar
Fon: +49(0)641-9 22 20 - 0
Fax: +49(0)641-9 22 20 - 20
info@beka-hospitec.de
www.beka-hospitec.de

Distributed by:

PRISM MEDICAL

485 Millway Ave. Concord Ont. L4K 3V4 | T 1.800.265.0677 | F 416.260.5580 |
www.prismmedical.ca

